

ADH COVID-19 Vaccination Plan

Updated: Feb 23, 2021



VACCINE PROCESS FOR INDIVIDUALS



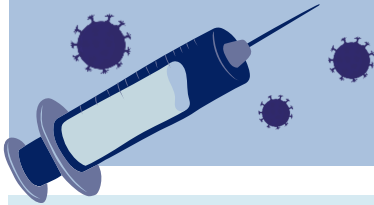
Reach out to a participating pharmacy or provider to let them know you need the vaccine.
ONLY CONTACT ONE PROVIDER

The pharmacy or provider will schedule an appointment and let ADH know how much vaccine they need.

ADH will place the vaccine orders.

Providers will receive a shipment date.

You should make the appointment for your second dose when you get your first dose.



VACCINE PROCESS FOR GROUPS

Your school or place of employment will set up a clinic or provide information about where and when you can get the vaccine.

Your school or place of employment will determine the number of vaccines needed and submit that to a provider.

The provider will use that information to let ADH know how much vaccine they need.

ADH will place the order and providers will receive a shipment date.

The provider will contact your employer to schedule a time for vaccinations.



Where can I get my vaccine?

Scan the QR code below or visit healthy.arkansas.gov for a list of locations!



Open camera app
Focus camera on the code
Follow instructions to see locations

Each county should anticipate that allocation strategies may shift during the response based on supply, demand, and needs within the state.

Phase timelines and priority groups may vary based on available vaccine supply and other factors.

Vaccine supply is limited. Arkansas receives more vaccines each week. Providers are working hard to vaccinate Arkansans as quickly as possible.

For more information contact:

Arkansas Department of Health
1-800-803-7847
ADH.CoronaVirus@arkansas.gov

Phase 1-A

Limited number of doses in state

- High priority health care workers
- Long-term care facility staff & residents
- Other high priority groups
 - Pharmacies
 - Home health
 - Private care/personal care
 - Hospice care
 - Dialysis centers
 - Correctional staff involved in patient care and transfer
 - Blood donation centers
 - Primary care
 - Urgent care
 - College/university student health center
 - K-12 health clinics and school nurses
 - Dental clinics
 - EMS, fire and law enforcement who serve as first responders
 - Morticians/funeral home staff involved in direct contact



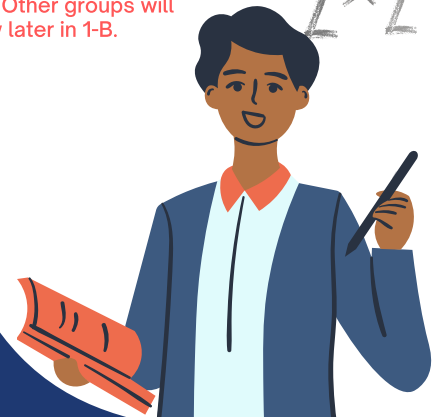
Phase 1-B

Limited number of doses in state

- Arkansans aged 65 years or older
- Education including K-12, child care and higher ed
- Frontline essential workers
 - Food and agricultural workers
 - Firefighters/police not in 1-A
 - Manufacturing workers
 - Grocery store workers
 - Public transit workers
 - U.S. Postal Service workers
 - Essential government workers
 - Other correctional staff

These groups are eligible as of Feb. 23. Other groups will follow later in 1-B.

$$2 \times 2 = 4$$



Phase 1-C

Limited but increasing number of doses

- People who are 16-64 with high-risk medical conditions
- Essential workers
 - Transportation and logistics
 - Water and wastewater
 - Food service
 - Shelter and housing
 - Public safety
 - Finance
 - IT and communications
 - Energy
 - Media
 - Public health workers



For more information contact:

Arkansas Department of Health
1-800-803-7847
ADH.CoronaVirus@arkansas.gov